

PRESSURE CONTROLLER

PC SERIES

This high quality Pressure Controller is for the automatic control of pressure pumps, to maintain constant pressure supply. Suitable for a wide range of pumps.



PC22-QP.ADS

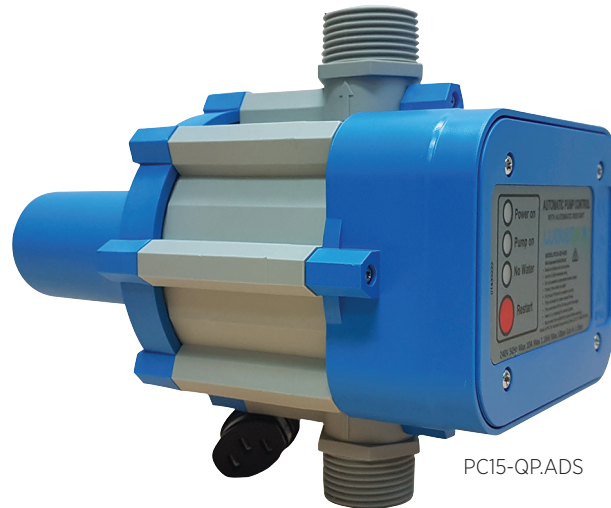


APPLICATIONS

- Automatic operation of pump
- Provides constant pressure supply
- Run dry protection

FEATURES & BENEFITS

- Manufactured to high quality standards
- Fitted with Australian Plug - 3.0m power supply cable
- Power-Pump-Failure Indicator Lights
- Unique Auto-Restart function. In the case of loss of water supply, it will periodically check for water every 24 hours and automatically re-start the pump when sufficient water is detected



PC15-QP.ADS

| CODE | MODEL | VOLTS | CONNECTION | FEATURE | CUT-IN PRESSURE SETTING | MAXIMUM | | | | CONNECTION |
|-------|-------------|-------|---|-------------------------|-------------------------|---------|-------|-----|------------|------------|
| | | | | | | BAR | POWER | | FLUID TEMP | |
| | | | | | | | AMPS | KW | | |
| 13328 | PC15-QP.ADS | 240 | 3 pin plug with quick connection socket | 24hr auto delayed start | 150 kPa | 10 | 10 | 1.1 | 60°C | 25mm |
| 16893 | PC22-QP.ADS | 240 | 3 pin plug with quick connection socket | 24hr auto delayed start | 220 kPa | 10 | 10 | 1.1 | 60°C | 25mm |