



Pumps for the Future

# REEFE™ SOLAR FLOATING LILY FOUNTAIN USER MANUAL

Model No: RFL150

## 1. COMPONENTS

- 1) Floating imitation lily fountain with pump inside.
- 2) Nozzle accessories

## 2. OVERVIEW

- 1) The solar pump is designed for outdoor fountain use, and is powered by solar energy.
- 2) The performance of the pump depends on the sunlight intensity and the angle at which sunlight strikes the panel surface.

## 3. ASSEMBLING

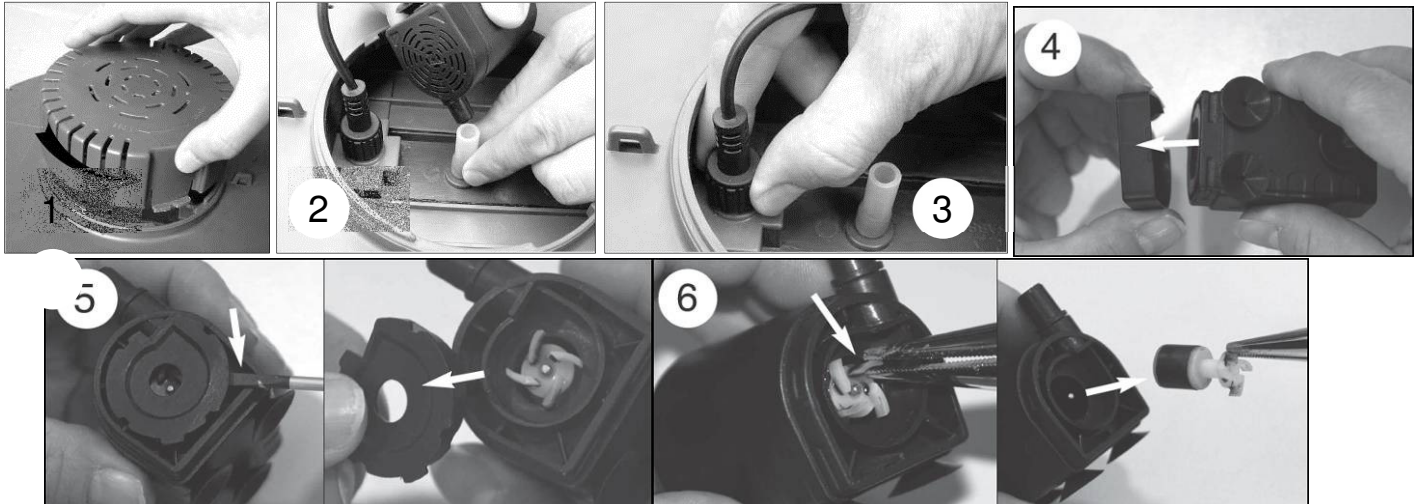
- 1) Unpack all components carefully.
- 2) Fit a nozzle onto the pump outlet, the nozzles can produce 3 different jet shapes.
- 3) Put the floating lily fountain on a small pond or water feature. The pump starts to pump water as long as sunlight shines on the solar module, the pump will stop pumping water when there is no sunlight reaching the solar panel. Clouds will also cause it to stop.
- 4) When it is placed in a big pond or pool, the floating lily can be anchored by means of a hook.
- 5) Make sure the pump is fully submerged when it is operating.

## 4. CAUTIONS

- 1) Any altering of the product itself or changing of the components voids warranty.
- 2) Operate the pump in water only (never above 40°C).
- 3) Do not strike the solar panel.
- 4) Do not let the pump run dry.

## 5. CLEANING AND MAINTENANCE

If after some time the pump starts losing power or stops working, please open the case, and then clean up sediment in pump shell. To clean the pump impeller, follow the steps below.



\*The solar panel should only be cleaned with soft tissue or propriety glass cleaning solution. In the case of a build-up of lime-scale (calcium deposits) use a mild descaling solution, following the instructions provided for a "shower head"- we recommend RUBBEDIN DESCALE MAGIC – available form most Hardware's and Supermarkets.

## 6. TROUBLE SHOOTING

\*Pump does not operate even though the solar lily fountain is in full sunlight.

- 1) The solar panel is covered with dust, debris or dead leaves etc. —clean the pair of solar panels.
- 2) Impeller is blocked—clean the pump as described in "CLEANING AND MAINTENANCE".

## 7. PERFORMANCE DATA

Operation voltage	7 V
Peak Power of Solar Panel	1.8 W
Maximum water lift height	0.5 M (1.64FT)
Maximum flow rate	155 L/H (41GPH)

- **ALL** Performance data is subject to change without notice, and is subject to the Solar Energy (Sunlight) available.

### **SOLAR PUMPS 24 MONTH LIMITED WARRANTY CONDITIONS**

1. Warranty covers only motor failure and manufacturing defects within a 24 month period from the original date of purchase for REEFE™ SOLAR PUMPS purchased and used in mainland Australia.
2. Faults arising due to: - Accidents, misuse, not following these instructions or power surges/spikes/brownouts will not be covered by this warranty
3. Warranty will be void if any tampering or removal of identification labels or electrical cables has occurred, or if pump is moved from the original place of installation or if any non-genuine parts have been fitted.
4. The costs of loss of livestock, damage to property, consequential losses or injury caused by the misuse or abuse or your installation of this appliance is not covered by this warranty. Also, consequential losses caused by faults or failure of this product (which are not reasonably foreseeable by RAMDEX INDUSTRIES to occur) are not covered by this warranty.
5. Faults caused by installation or improper servicing will not be covered. In addition defects stemming from insufficient maintenance are not covered.
6. Warranty is void if this pump is used for pumping anything other than fresh, clean water, or clean saltwater.
7. In the case of pump failure, you must:
  - 1) Check the trouble shooting guide first.
  - 2) Then call RAMDEX on 1300 726 339 and speak to the Warranty Department who will authorize repair or replacement OR you may return to the original place of purchase for replacement or refund.
8. For any warranty claim to be valid, an original proof of purchase must be supplied, or an acceptable substitute.
9. If an exact replacement is not possible the closest equivalent product will be supplied at Ramdex Industries discretion.
10. This product is guaranteed as fit for the purpose of use as stated on the outer packaging, and NO other use.
11. Condition of Warranty: This pump is not to be used as your sole water supply or for drinking water or for fire-fighting purposes.
12. Condition of Warranty: This pump MUST NOT be installed in any manner that if it were to leak that it would cause damage or loss to property or persons. It MUST be installed in a well-ventilated and drained area. All warranty is void if this condition is not heeded and no liability can be accepted in the case of damage or loss caused by failing to comply with this condition.
13. This product is not intended for use by children or infirm persons. It is your responsibility to ensure, by way of supervision or isolation, that children or other infirm or irresponsible persons are not harmed by this product. The Sealed Battery unit is of LEAD ACID type and is EXPLOSIVE, and contains TOXIC CHEMICALS, no user repairable parts are included and the sealed unit must NOT be opened.
14. All installations must comply with the local Council, Shire, electrical and plumbing regulations in your area.
15. The sealed battery is a wearing part and is not covered under warranty except in the case of severe premature failure. The expected lifespan is 12 to 18 months.
16. Our goods come with guarantees that cannot be excluded under the Australian Consumer Law. You are entitled to a replacement or refund for a major failure and for compensation for any other reasonably foreseeable loss or damage. You are also entitled to have the goods repaired or replaced if the goods fail to be of acceptable quality and the failure does not amount to a major failure. If you (the purchaser) do not fall within the meaning of 'consumer' in the Australian Consumer Law some or all of the provisions of the Australian Consumer Law will not apply to you.

©Copyright Ramdex Industries. REEFE® and Ramdex® are Registered Trademarks of Ramdex Industries. Specifications are approximate and subject to change without notice at Ramdex Industries discretion. Since the methods and conditions of application are beyond our control, Ramdex Industries does not accept liability for any deficiency in performance resulting from the misuse or abuse of its products, the user must ascertain that the chosen product is suitable for their purpose. Product may differ to that illustrated due to design improvements. This pump has not been tested for use with potable water. Conditions apply to all Ramdex Industries product warranties which may be varied at Ramdex Industries discretion.

**IMPORTANT NOTE:** DO NOT use for anything other than clean, fresh or saltwater.

**NOTE:**

1. Save Power and the Environment refers to the fact that this product does not require mains power to operate. Note that this product has not been independently tested to verify the savings.
2. Performance figures are for the maximum performance in full mid-day summer sunlight and will vary according to the Solar Energy available; the pump may not operate at all when the Sun is obscured by clouds or dust. This Solar Pump does not operate during the night, except for Battery Back-up versions.