

RAIN/STORMWATER TANK FILL

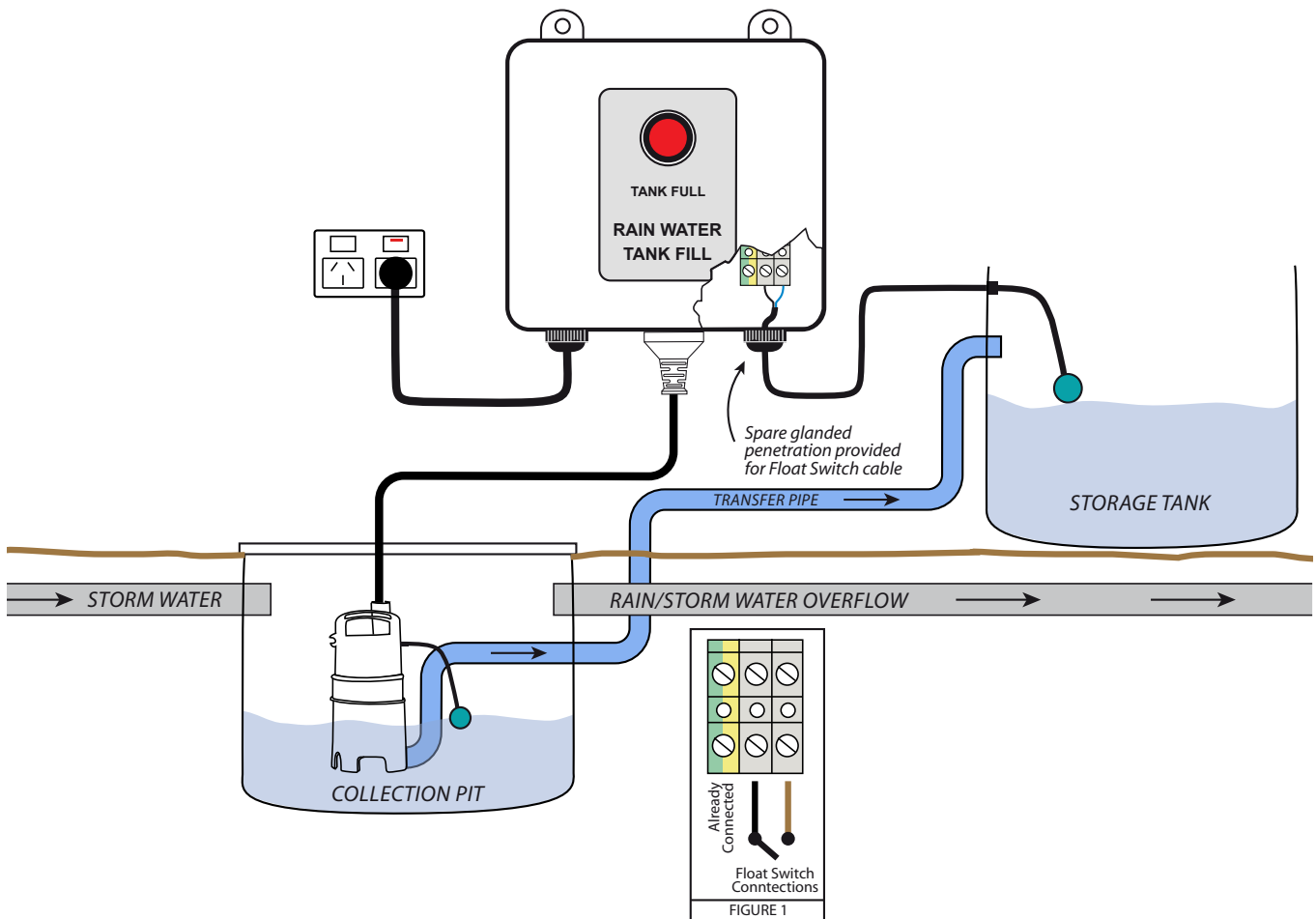
The REEFE Pump Shut Off Controller is a user-friendly plug & play design for faster cost-effective installations. This safety designed system has plug & play connections meaning there is no need for costly electrician visits for installation. The float is powered by low voltage current for ultimate on-site safety. Designed for controlling pumps 240V single phase up to 10A (1.5kW). This clever creation combines 2 controllers into one with dual functions and can be used for either tank fill applications or tank empty applications. Through pressing the simple change function button, you can select the function to best suit your site requirements.

FEATURES

- Automatic 'Tank Full' pump inhibitor
- 'Tank Full' indicator light
- Low voltage float switch circuitry
- Rated for pumps up to 6 Amps
- Weatherproof polycarbonate enclosure

KIT INCLUDES

- Controller enclosure including power lead and moulded plug
- Mounting bracket
- 10m NBR float switch
- Standard 3 pin plug connection for pump
- Quick plug connection for float switch



CODE	DESCRIPTION
12981	REEFE Pump Tank Fill Controller with Float Switch