

Y-STRAINER & PREFILTER

RSFP SERIES

Easy to install and economical, the strainer pre-filters will protect your pump from solids. These reusable particle filters are designed to be installed between the rainwater tank and the Pressure Pump. This protects the pump from damaging grit and poly-tank shavings, extending the life of the pump and helping to prevent premature pump failure.

FEATURES

- Protects pump from damaging grit & poly tank shavings
- Clear housing - easy visibility of solids
- Extends the life of the pump
- Washable, reusable filter cartridge
- Easy open - no spanner required
- Air bleed port on prefilter
- RSFP25 has a larger surface area with the ability to check the filter without needing to open it
- Certified to AS/NZS4020 for use with potable water

Y-Strainer



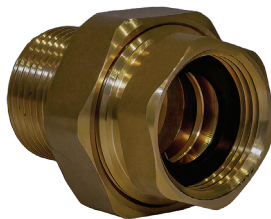
RSFP25



| CODE | MODEL | DESCRIPTION | MAX FLOW (L/MIN) | MAX PRESSURE (kPa / bar) | INLET / OUTLET | | MICRON |
|-------|------------|---|------------------|--------------------------|----------------|----|--------|
| | | | | | MM | IN | |
| 12800 | RSFP25 | Strainer Filter with Cartridge & Easy Open Spanner | 120 | 400 / 4 | 25 | 1" | 100 |
| 13120 | Y-Strainer | Plastic Y-Strainer with Stainless Steel Filter Screen | 150 | 900 / 9 | | | 1000 |

PUMP ACCESSORIES

| CODE | DESCRIPTION |
|-------|---|
| 22665 | 63mm EU Pressure Gauge - 10 bar - Back Entry |
| 22689 | 63mm EU High Pressure Gauge - 25 bar - Back Entry |



| CODE | DESCRIPTION |
|------|---|
| 3862 | Brass Barrel Union 25mm BSP M/F Standard Type |

| CODE | DESCRIPTION |
|------|--|
| 4586 | Combo Check Valve 25mm BSP including 5-way Tee (with 2 x 6mm FBSP ports) |



| CODE | DESCRIPTION |
|-------|--|
| 26298 | Universal 25mm 5-way Tee with Integrated Check Valve |