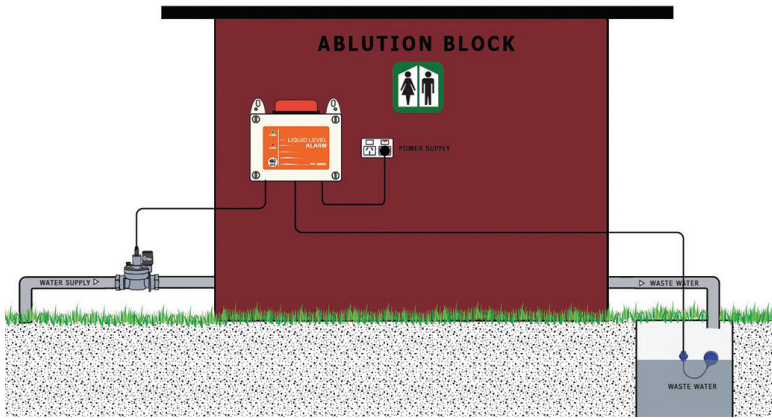


WATER SHUT-OFF & LEVEL ALARM



The REEFE Water Shut-off & Level Alarm is a system controller developed to isolate the supply of Mains Water in the event of certain alarm conditions. The controller is generally used for applications where the wastewater being discharged from an abluition block is required to be pumped away. Allowing water supply to continue in the event of power failure or pump fault, could result in an overflow or environmental spill of untreated wastewater. By monitoring the level in the Outfall tank and the presence of Mains power, the controller appropriately switches the water supply Valve open or closed. The controller also incorporates 'Power On', 'Alarm' (strobe & LED) indication, as well as an Audible Siren complete with Mute button, which is activated in the event of a High Level.

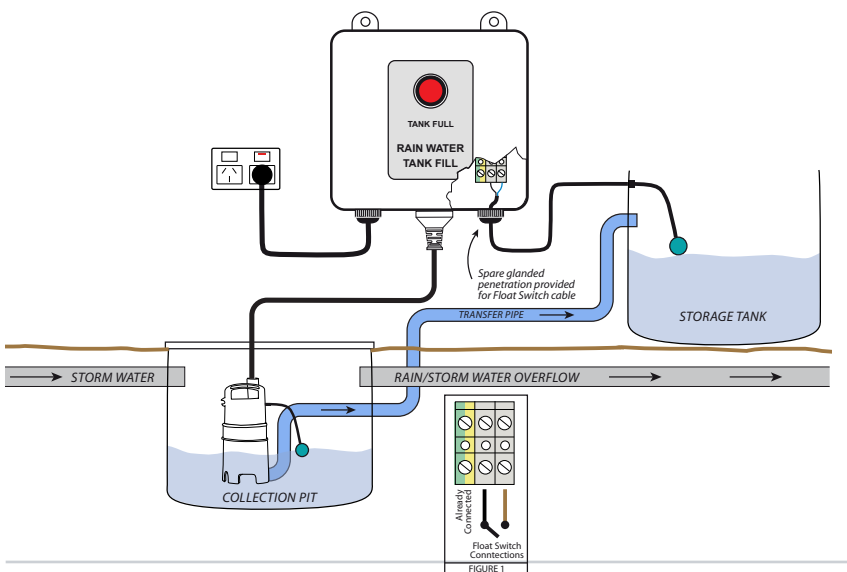
FEATURES

- Alarm with strobe & LED
- Audible Siren

CODE	MODEL	INPUTS	CONNECTIONS	ENCLOSURE	VALVE	FLOAT
9204	Water Shut-Off & Level Alarm	240VAC Power Supply 12VDC Float Switch	240VAC Power Outlet for Pump (Constant Power) 12VDC Quick Plug Socket for Valve 12VDC Quick Plug Socket for Float Switch	IP55 Weatherproof Polycarbonate 180 x 140 x 90mm	12VDC Pulse Latching 20mm Heavy Duty Nylon 2m Lead c/w with Quick Plug Connector	9006 Nitrile Rubber Cable 10m Lead c/w Quick Plug Connector

RAIN/STORMWATER TANK FILL

The REEFE Pump Shut Off Controller is a user-friendly plug & play design for faster cost-effective installations. This safety designed system has plug & play connections meaning there is no need for costly electrician visits for installation. The float is powered by low voltage current for ultimate on-site safety. Designed for controlling pumps 240V single phase up to 10A (1.5kW). This clever creation combines 2 controllers into one with dual functions and can be used for either tank fill applications or tank empty applications. Through pressing the simple change function button, you can select the function to best suit your site requirements.



FEATURES

- Automatic 'Tank Full' pump inhibitor
- 'Tank Full' indicator light
- Low voltage float switch circuitry
- Rated for pumps up to 6 Amps
- Weatherproof polycarbonate enclosure

KIT INCLUDES

- Controller enclosure including power lead and moulded plug
- Mounting bracket
- 10m NBR float switch
- Standard 3 pin plug connection for pump
- Quick plug connection for float switch

CODE	DESCRIPTION
12981	REEFE Pump Tank Fill Controller with Float Switch