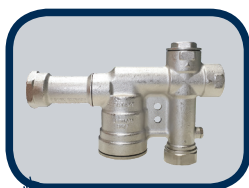




RM1500-2 with REEFE® RPS036 / 050

RM SYSTEMS

The RM1500-2 with RPS series is designed for speed of installation with integrated pressure controller, no solenoid valve or electronic controls. This system stops mains supply while the rain water is being pumped to help conserve our precious resource. When in mains status it provides full pressure and full flow. Covered by a two year in-field warranty.



RM1500-2 Water Diversion Valve



APPLICATIONS

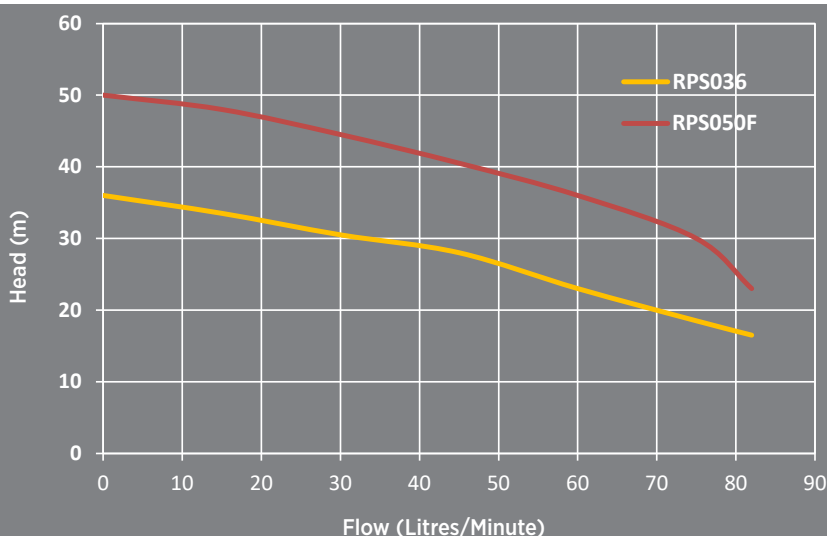
- Whole house supply up to 6 bathrooms*
- Toilet blocks*
- Garden irrigation*
- Ablutions blocks*
- Hotels & motels*
- Factories & warehouses*
- Units & complexes*
- Council parks irrigation*

FEATURES & BENEFITS

- Watermark certified componentry
- This system automatically checks for rainwater periodically. If there is no tank supply, the mains supply flows
- Simply plug in - no electrician required
- Affordable solution for new and old installations
- Pump has integrated pressure controller with auto re-start and run dry protection
- Compact design with water cooled motor
- Corrosion resistant
- Base ensures suction inlet is out of the sludge that builds up on the bottom of rainwater tanks
- Tested to AS4020 for potable water

PUMP CONSTRUCTION

- Grade 304 stainless steel casing and shaft
- Plastic impellers and diffusers
- Plastic pump base and discharge body
- 5 impellers. RPS050: 7 impellers



* Check specifications required.

CODE	DESCRIPTION	POWER 240V		MAXIMUM		NO. OF TAPS	CABLE LENGTH	OUTLET	SIZE DIA X H (MM)
		HP	KW	HEAD (M)	FLOW (L/MIN)				
12895	RM1500-2 with REEFE® RPS036 Submersible Pressure Pump	0.5	0.37	36	82	4 - 6	10m	1"	125 x 870
17685	RM1500-2 with REEFE® RPS036F Submersible Pressure Pump								
19337	RM1500-2 with REEFE® RPS050F Submersible Pressure Pump	1.1	0.8	50	86	6 - 9	10m	1"	125 x 950