

## WATERWALLS

Waterfalls, waterwalls and focal point water features have been in vogue in gardens and outdoor living spaces for many years. Home owners have grown to love the sense of ambience and the soothing atmosphere waterwalls add to their outdoor spaces.

There are two main types of waterwalls to choose from, each providing a different effect - sheet descent waterwalls, and projecting waterwalls. Ensure you incorporate the waterwall design correctly into the installation, and specify the correct type for the project, as warranty does not cover removal and replacement costs.

## SHEET DESCENT WATERWALLS

This is the wall-washing effect, where the sheet of water flows vertically down the face of the wall or surface. Install to flow down or between glass for a modern feel, or dramatise the effect by running the water down a surface studded with decorative stones or tiles - the variations are endless! Add a LED light bar to illuminate the effect after dark! With care in design, construction and installation, these waterwalls can be installed up to 3m high.

## PROJECTING WATERWALLS

With a projecting waterwall, the curtain of water projects out from the wall in an arc, re-entering the pond away from the wall. This creates the impressive effect of a natural waterfall, with a some splash and soothing noise. Add a LED light bar to illuminate the effect after dark!

As these waterwalls are often noisier than sheet descent waterwalls, always consider your neighbours when installing. Due to increased flow rates being required to provide the projecting fall, a larger pump is required. A larger waterfall base pond is also required due to increased splash.

There are also restrictions on the maximum height projecting waterfalls can be installed at: typically 1.0-1.2m high for the Acrylic versions, and only 0.7m high for the Combo stainless steel units. If the unit is installed higher than this, the curtain of water will start to break up into droplets which may not be the desired effect. Consideration must be given also to the effect of wind, which will move the water-curtain around during its descent. This may result in excessive water loss.

### INSTALLATION TIP

## ACRYLIC WATERWALLS

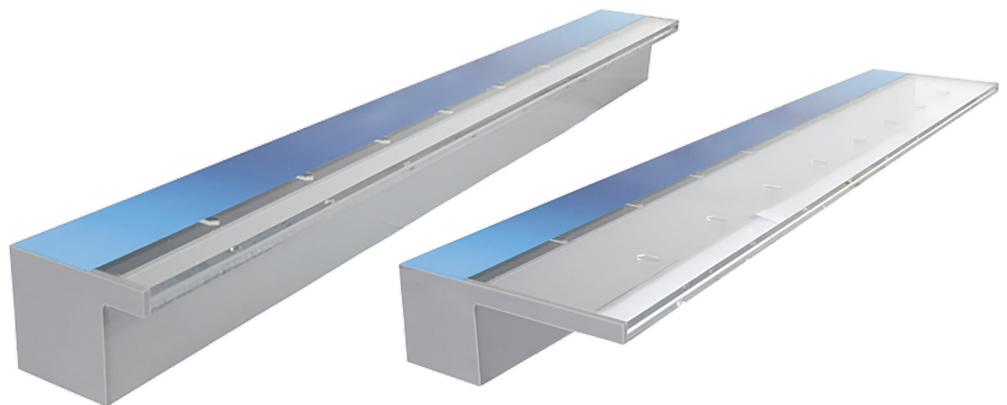
These pressurised waterfall units are available in the following standard sizes. The 125mm nozzle versions are designed to fit in the mortar-line of bricks or blockwork. Always test unit before completely bricking in to ensure it is level and water is falling correctly. The projection may be adjusted with the flow supplied, approx. figures are given below.

Note: Customised specifications are NOT available on acrylic waterfalls.

CODE	INLET POSITION	INLET SIZE	SIZE	MIN. FLOW AT INLET (L/Hr) FOR SHEET DESCENT EFFECT	MIN. FLOW AT INLET (L/Hr) FOR PROJECTING EFFECT
19506	Back	1 x 32mm FBSP	600mm, 30mm nozzle	2700	5400
19509	Back	1 x 32mm FBSP	900mm, 30mm nozzle	4050	8100
19512	Back	2 x 32mm FBSP	1200mm, 30mm nozzle	5400	10800
19515	Back	2 x 32mm FBSP	1500mm, 30mm nozzle	6750	13500
19526	Bottom	1 x 32mm FBSP	600mm, 30mm nozzle	2700	5400
19529	Bottom	1 x 32mm FBSP	900mm, 30mm nozzle	4050	8100
19532	Bottom	2 x 32mm FBSP	1200mm, 30mm nozzle	5400	10800
19535	Bottom	2 x 32mm FBSP	1500mm, 30mm nozzle	6750	13500
19559	Back	1 x 32mm FBSP	600mm, 125mm nozzle	2700	5400
19566	Back	1 x 32mm FBSP	900mm, 125mm nozzle	4050	8100
19573	Back	2 x 32mm FBSP	1200mm, 125mm nozzle	5400	10800
19580	Back	2 x 32mm FBSP	1500mm, 125mm nozzle	6750	13500
19606	Bottom	1 x 32mm FBSP	600mm, 125mm nozzle	2700	5400
19609	Bottom	1 x 32mm FBSP	900mm, 125mm nozzle	4050	8100
19612	Bottom	2 x 32mm FBSP	1200mm, 125mm nozzle	5400	10800
19615	Bottom	2 x 32mm FBSP	1500mm, 125mm nozzle	6750	13500



Add a light bar to create a spectacular display after dark! Refer next page.



### IMPORTANT NOTES

- 1) WARNING!** The outlet **MUST** be protected from direct sunlight. Do not have the outlet protruding from the wall.
- 2)** Construct the surround to allow easy removal in the event of replacement. Warranty does not cover labour costs and is limited to product replacement only.
- 3)** These products are extremely popular and as they are imported, stock-outs may occur. Please confirm availability prior to ordering.
- 4)** Sizes are nominal and may vary slightly. This in no way affects the function of the product.
- 5)** The nozzles must not be altered or modified in any way and must be fully enclosed (except outlet) when installation is complete.
- 6)** Maximum pressure at inlet of 30kPa. Excessive pressure will cause damage to the internal structure, which is not covered by warranty.

### BASIC INSTALLATION GUIDELINES

- 1)** Ensure front outlet is perfectly level. The recommended installation height is 800 to 1000mm from the water surface. Seal around the outlet to prevent possibility of any leakage back into the wall.
- 2)** Fit valves to each inlet and ensure tubing length is identical to all inlets.
- 3)** Install your pump. Ensure it is correctly sized!
- 4)** Pump prefilter or in-line strainer must be installed to prevent leaf particles, etc. from entering the waterfall.
- 5)** A steel lintel must be installed for any wall or load-bearing structure built above the waterfall.