

## MULTISTAGE PRESSURE PUMP ONLY

### PRM-E SERIES



The PRM European Series of multistage pressure pumps are of superior quality construction, featuring market leading efficiency and reliability. These pumps are ideal for transfer and distribution of water in domestic applications. Highly adaptable, the PRM's can be fitted with additional componentry to meet application needs.

#### APPLICATIONS

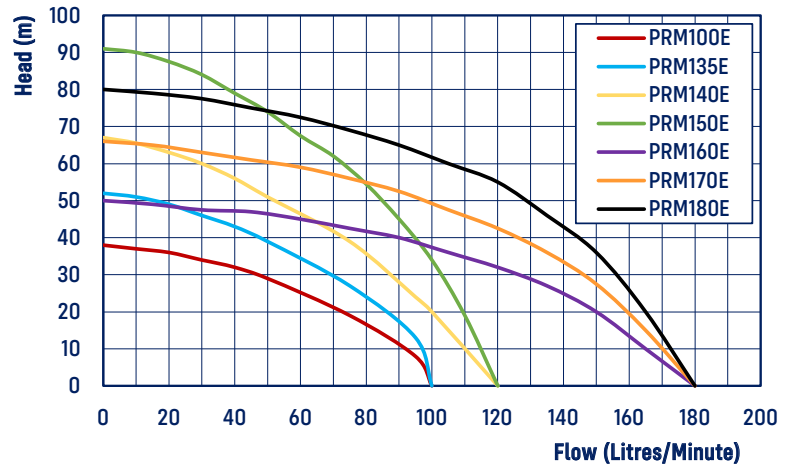
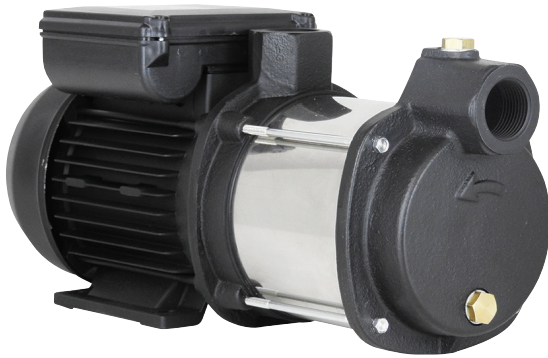
- Clean Water Transfer
- Rain to Mains Systems
- Household Supply
- Garden Irrigation
- Booster Pump
- Toilet Blocks
- Industrial Cleaning

#### FEATURES & BENEFITS

- European made, features a robust construction for longer service life
- Motor is externally ventilated for heat control
- Specifically designed for continuous and quiet operation
- Lower power consumption for maximum efficiency
- Suction lift capability
- Supplied with 1.5m cable with Quick Plug for ease of installation
- Max Water Temperature 35°C

#### CONSTRUCTION

- Cast Iron pump body
- Stainless Steel 304 exterior casing & impellers
- Stainless Steel 416 shaft
- Noryl/Fiberglass diffusers
- Aluminium motor casing
- Ingress Protection IP44
- Insulation Class F



CODE	MODEL	POWER 240V			RATED		MAXIMUM		CABLE LENGTH (M)	INLET   OUTLET		WEIGHT (KG)	SIZE L X W X H (MM)
		AMPS	P1 (KW)	P2 (KW)	FLOW (L/MIN)	HEAD (M)	FLOW (L/MIN)	HEAD (M)		MM	IN		
23860	PRM100E.T	4.2	0.97	0.75	48	30	115	38	1.5	25	1"	13	369x155x179
23877	PRM135E.T	5.4	1.24	0.8	50	38	115	52	1.5	25	1"	13.5	389x155x179
23884	PRM140E.T	7.2	1.66	1.2	60	47	120	67	1.5	25	1"	14	408x155x179
26465	PRM150E.T	8.6	1.98	1.5	60	67	120	91	1.5	25	1"	16	447x155x179
26472	PRM160E.T	9.0	2.05	1.1	90	40	175	50	1.5	32	1 1/4"	17.5	453x191x212
26489	PRM170E.T	11.8	2.58	1.5	90	52	175	66	1.5	32	1 1/4"	19	478x191x212
26496	PRM180E.T	12.4	2.76	2.2	90	65	175	81	1.5	32	1 1/4"	20	502x191x212