



## AUTOMATIC PRESSURE CONTROLLER

WPC SERIES

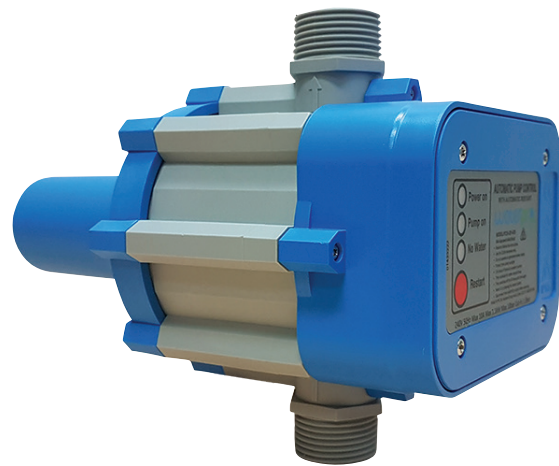
The WaterPro pressure controller is designed for the automatic control of pressure pumps to maintain constant pressure supply. European made, for guaranteed reliability in various domestic applications.

### APPLICATIONS

- Constant pressure supply in domestic applications
- Automatic operation of pressure pumps
- Irrigation
- Rain to Mains Systems

### FEATURES & BENEFITS

- Automatic operation eliminating the need for manual resets/operation
- Integrated protection system to prevent dry-running operation
- Compact design and easy to install
- Light indicators, power on-power off, 'low water'



CODE	MODEL	CONNECTION	POWER 240V		CUT IN PRESSURE	MAX FLOW (L/MIN)	INLET   OUTLET		WEIGHT (KG)
			MAX AMPS	MAX kW			MM	IN	
20906	WPC15E	Quick Plug	10	1.5	Fixed: 1.5 bar	133	25	1"	0.97
24621	WPC15E	3 Pin Socket		1.5	Fixed: 1.5 bar				
26106	WPC22EADJ	Quick Plug		2.2	2.2 bar (Adj. 1.5-3.5 bar)				
26137	WPC22EADJ	3 Pin Socket		2.2	2.2 bar (Adj. 1.5-3.5 bar)				
13328	PC15-QP-ADS	Quick Plug		1.1	150 kPa	120			