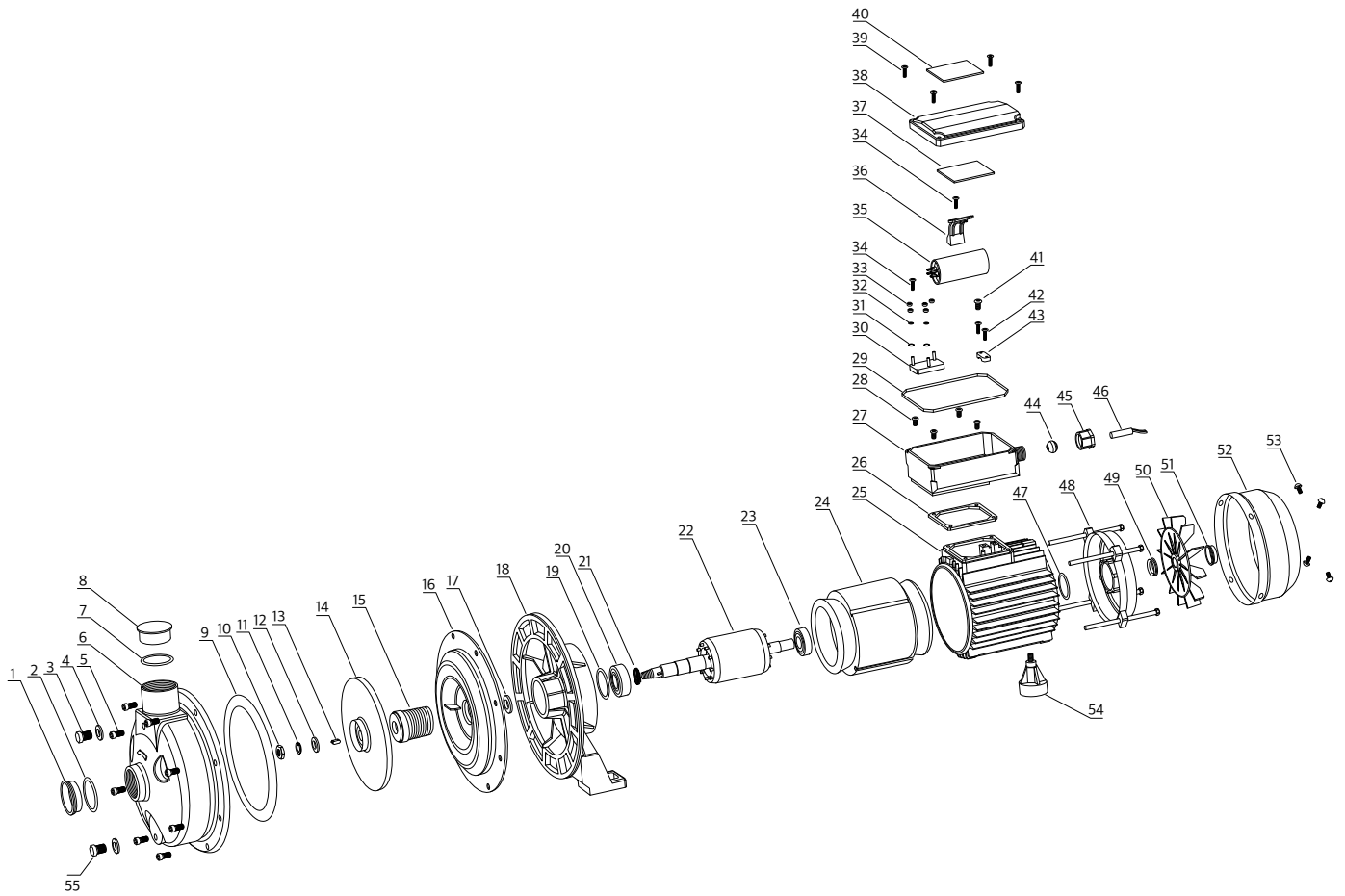


RSSC075 & RSSC155 Stainless Steel Centrifugal Pump



RSSC075 & RSSC155 Stainless Steel Centrifugal Pump

No.	Name	Material
1	Dust Cap	Polypropylene
2	O-Ring	NBR
3	Air Drain Plug	SUS304
4	Washer	Nylon
5	Bolt	SUS304
6	Pump Housing Front	SUS304
7	O-Ring	NBR
8	Dust Cap	PP
9	Housing	NBR
10	Hexagonal Nut	SUS304
11	Spring Washer	SUS304
12	Washer	SUS304
13	Key	SUS304
14	Impeller	SUS304
15	Mechanical Seal	Carbon/Ceramic
16	Housing Backplate	SUS304
17	Shaft seal ring	NBR
18	Front Cover	ADC12
19	Flange Cover Pad	NBR
20	Bearing	
21	Axial Spring Collar	
22	Rotor Assembly	
23	Bearing	
24	Stator Assembly	
25	Motor Base	
26	Terminal Box Pad	
27	Bottom Part Terminal Box	Flame Resistant ABS

No.	Name	Material
28	Pan head screw & washer assemblies	Plated Steel
29	O-Ring	NBR
30	Connection Pole	Melamine +A3
31	Lock washer external teeth	Plated Steel
32	Washer	Plated Steel
33	Hexagonal Nut	Plated Steel
34	Cross recessed pan head tapping screw	Plated Steel
35	Capacitor	
36	Capacitor Gland	Flame Resistant ABS
37	Wiring Diagram	Sticker
38	Upper part of terminal box	Flame Resistant ABS
39	Pan head tapping screw	SUS304
40	Name plate	Sticker
41	Pan screw spring washer & plain washer assembly	SUS304
42	Pan head tapping screw	Plating Zinc
43	Cable Clamp	ABS
44	Cable Gland Olive	NBR
45	Cable Gland Nut	ABS
46	Cable	
47	Spring Washer	60Si2MnA
48	Back Cover	ADC12
49	Spacer	Plating Zinc
50	Fan	PP
51	Fan Fix Ring	A3
52	Fan Cover	08F
53	Pan head screw & washer assemblies	SUS304
54	Rear Foot	ABS+A3
55	Drain Plug	